

This sheet is to identify type of plastic modular belt.

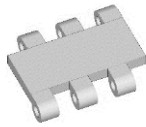
50mm Pitch – (50mm x 75mm wide)



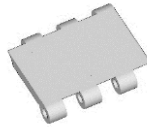
M7 - Slotted



M8 - Perforated

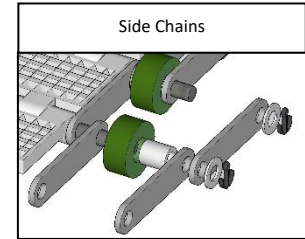


M9 – Solid top



M9A – Solid (Covered Knuckle)

Attachments
 (Not available on all types of belt)



12mm High



25mm High



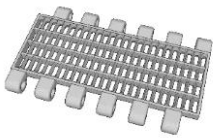
50mm High



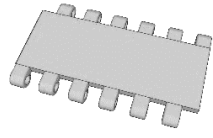
75mm High

M9b – Cross flight Modules

3" (76.2mm) Pitch – (76.2mm x 152.4mm)

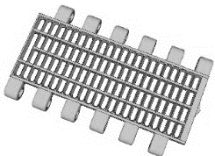


M10a - Perforated

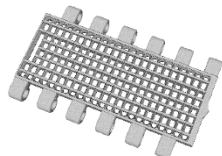


M13a – Solid Top

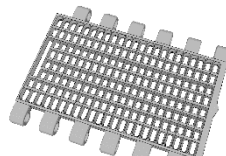
Freezer Series 3" (76.2mm) & 4" (101.6mm) pitch



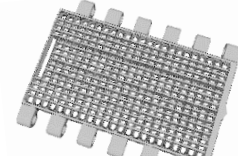
M19 – 3" Perforated (3 bar)



M20 – 3" Perforated (7 bar)



M21 – 4" Perforated (7 bar)



M21A – 4" Perforated (15 bar)3.5x2.5mm

M21B – 4" Perforated (15 bar)2.5x2.5mm

Plastic Honeycomb



M14 – (also known as 1082AM)